

Raising quality through data-driven rework in the automotive industry



Dr. Christian Hertle | November 11th, 2020





Where we are aiming at

Initial situation

Production negatively affected ~ 3 month

Problem occurs

Problem detection

Problem analysis

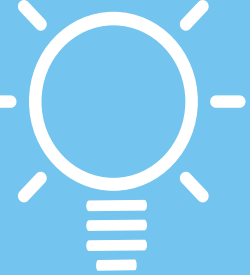
Detection and
removal of root cause

Analysis (context of the event from the past)

Target state

Time saving up to 85 %

Time saving



How we use AI to do it

- Predict rework manpower & give action recommendations
- Fix problems inline: predict bottle necks & failure modes

